

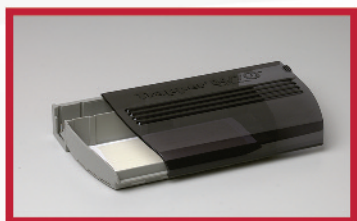
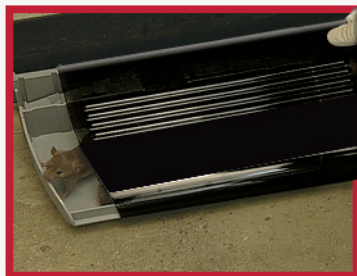
# TRAPPER® 24/7



## THE NEW STANDARD IN MULTIPLE CATCH MOUSE TRAPS

### PRODUCT FEATURES:

- ▶ Proven performance and reliability
  - Extensive field and laboratory testing
  - Unsurpassed capture rates versus other multiple catch traps
- ▶ Superior durability
  - Constructed of an extremely strong, impact-resistant material
  - Withstands many everyday collisions that leave other units dented or non-functional
  - Shatter resistant – won't break into small pieces
- ▶ Attractive and easy-to-use
  - Blends into any environment
  - Horizontal sliding lid provides greater control when servicing
  - No winding, no rust, no sharp edges
  - Rounded interior walls for fast cleaning
  - Accommodates glue boards for monitoring mouse and insect activity and fast clean-up
  - Tinted lid keeps captures inconspicuous, yet easy to monitor with flashlight



**PRODUCT**  
Trapper 24/7

**CODE**  
MC2470

**CASE QTY**  
12 per case



**More Than Meets The Eye**

Madison, Wisconsin 53704 USA | Ph: (608) 241-0202 | Fax: (608) 241-9631

[www.belllabs.com](http://www.belllabs.com)