

PULL HERE TO OPEN ►

GROUP 5 HERBICIDE

Pramitol® 25E HERBICIDE

For total vegetation control of weeds
in noncrop areas

| ACTIVE INGREDIENT: | % BY WT. |
|--|----------|
| Prometon: 2,4-bis(isopropylamino)- 6-methoxy-s-triazine | 25.0% |
| OTHER INGREDIENTS*: | 75.0% |
| TOTAL: | 100.0% |

*Contains petroleum distillates.

This product contains 2 lbs. active ingredient per gallon.

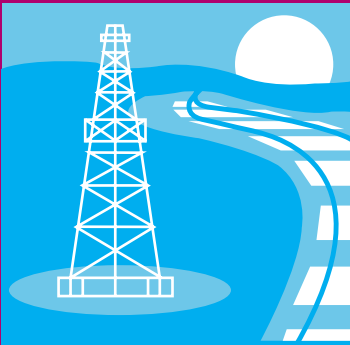
KEEP OUT OF REACH OF CHILDREN CAUTION/PRECAUTION

Si usted no entiende la etiqueta busque a alguien para que se la explique a usted en detalle. (If you do not understand the label, find someone to explain it to you in detail.)

For First Aid, precautionary, handling, and use statements, see inside of this booklet.

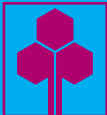
EPA Reg. No. 66222-22
EPA Est. No. 34704-MS-1

NET CONTENTS:
2.5 GALLONS
EPA 031914/Rev A



Bare ground weed control around buildings, storage areas, fences, pumps, machinery, fuel tanks, recreational areas, roadways, guardrails, airports, military installations, highway medians, pipelines, railroads, lumberyards, industrial sites, and rights-of-way.

One gallon treats up to 10,000 sq. ft.



**Makhteshim Agan
of North America, Inc.**
3120 Highwoods Blvd
Suite 100
Raleigh, NC 27604

MANA



FIRST AID

| | |
|--------------------------------|--|
| IF SWALLOWED: | <ul style="list-style-type: none">• Immediately call a poison control center or doctor.• Do not induce vomiting unless told to do so by a poison control center or doctor.• Do not give any liquid to the person.• Do not give anything by mouth to an unconscious person. |
| IF ON SKIN OR CLOTHING: | <ul style="list-style-type: none">• Take off contaminated clothing.• Rinse skin immediately with plenty of water for 15-20 minutes.• Call a poison control center or doctor for treatment advice. |
| IF IN EYES: | <ul style="list-style-type: none">• Hold eye open and rinse slowly and gently with water for 15-20 minutes.• Remove contact lenses, if present, after the first 5 minutes, then continue rinsing.• Call a poison control center or doctor for treatment advice. |
| IF INHALED: | <ul style="list-style-type: none">• Move person to fresh air.• If person is not breathing, call 911 or an ambulance, then give artificial respiration, preferably mouth-to-mouth if possible.• Call a poison control center or doctor for further treatment advice. |

Have the product container or label with you when calling a poison control center or doctor or going for treatment. You may also contact Prosar at 1-877-250-9291 for emergency medical treatment information.

NOTE TO PHYSICIAN: Contains petroleum distillate; vomiting may cause aspiration pneumonia. Probable mucosal damage may contraindicate the use of gastric lavage. Treat for circulatory shock, respiratory depression, and convulsions, if needed.

PRECAUTIONARY STATEMENTS

HAZARDS TO HUMANS AND DOMESTIC ANIMALS

CAUTION

Harmful if swallowed or absorbed through skin. Causes moderate eye irritation. Avoid contact with skin, eyes, or clothing. Wash thoroughly with soap and water after handling and before eating, drinking, chewing gum, using tobacco, or using the toilet. Remove contaminated clothing and wash clothing before reuse.

PERSONAL PROTECTIVE EQUIPMENT (PPE)

Some materials that are chemical-resistant to this product are listed below. If you want more options, follow the instructions for category E on an EPA chemical resistance category selection chart.

Follow manufacturer's instructions for cleaning/maintaining PPE. If no such instructions for washables exist, use detergent and hot water. Keep and wash PPE separately from other laundry.

Discard clothing and other absorbent material that have been drenched or heavily contaminated with the product's concentrate. Do not reuse them.

All mixers, loaders, applicators, and other handlers must wear:

- Long-sleeved shirt and long pants
- Socks and shoes
- Chemical-resistant gloves such as Barrier Laminate, Nitrile Rubber \geq 14 mils, Neoprene Rubber \geq 14 mils, Viton \geq 14 mils

In addition, mixers and loaders supporting motorized ground equipment and handlers cleaning up spills or equipment must wear:

- Chemical-resistant gloves such as Barrier Laminate, Nitrile Rubber \geq 14 mils, Neoprene Rubber \geq 14 mils, Viton \geq 14 mils

USER SAFETY RECOMMENDATIONS

Users should:

- Wash hands before eating, drinking, chewing gum, using tobacco, or using the toilet.
- Remove clothing/PPE immediately if pesticide gets inside. Then wash thoroughly and put on clean clothing.
- Remove PPE immediately after handling this product. As soon as possible, wash thoroughly and change into clean clothing.

ENVIRONMENTAL HAZARDS

This pesticide may adversely affect non-target plants. Do not apply directly to water, to areas where surface water is present, or to intertidal areas below the mean high water mark. Do not contaminate water when cleaning equipment or disposing of equipment wash waters or rinsate.

This chemical has properties and characteristics associated with chemicals detected in groundwater. The use of this chemical in areas where soils are permeable, particularly where the water table is shallow, may result in groundwater contamination. Application around a cistern or well may result in contamination of drinking water or groundwater.

PHYSICAL OR CHEMICAL HAZARDS

Combustible. Do not use or store the product near heat or open flame. Store at temperatures above 32°F.

DIRECTIONS FOR USE

It is a violation of federal law to use this product in a manner inconsistent with its labeling.

PRODUCT INFORMATION

Pramitol 25E is a nonselective herbicide that can be applied in water or oil before or after plant growth begins. Although Pramitol 25E has considerable activity through foliar contact, much of its activity is through roots; therefore, **its effectiveness is dependent on rainfall to move it into the root zone. Very dry soil conditions and lack of sufficient rainfall may result in poor weed control.**

This product will not provide herbicidal action in the treated area unless application is immediately followed by watering the area with at least ¼" of water or application of the product just prior to a rain event sufficient to penetrate to the root system of the target vegetation.

Important: Use only in areas where complete control of all vegetation is desired such as industrial sites, rights-of-way, lumberyards, petroleum tank farms, around farm buildings, along fence lines, etc. When applied to the soil, this product usually inhibits plant growth for a year or more.

Following many years of continuous use of this product and chemically related products, biotypes of some of the weeds listed on this label have been reported which cannot be effectively controlled by this and related herbicides. Where this is known or suspected, we recommend the use of this product in combination with other registered herbicides which are not triazines. Consult with your State Agricultural Extension Service for specific recommendations.

Pramitol 25E is generally noncorrosive to equipment but may cause swelling or more rapid deterioration of hoses and fittings containing natural rubber.

When an adjuvant is to be used with this product, Makhteshim Agan of North America, Inc. suggests the use of a Chemical Producers and Distributors Association certified adjuvant.

USE RESTRICTIONS:

Do not apply this product in a way that will contact workers or other persons, either directly or through drift. Only protected handlers may be in the area during application.

Do not use this product to sloped areas where desirable vegetation or nearby water bodies may be located downhill of the application area, since injury to desirable plants and other vegetation may result.

Do not apply this product in a residential setting.

Weeds greater than 4 inches must be mowed, removed, or hoed into the soil prior to application.

Do not enter or allow entry until sprays have dried.

SPRAY DRIFT MANAGEMENT

A variety of factors including weather conditions (e.g. wind direction, wind speed, temperature, relative humidity) and method of application (e.g. groundboom, sprayer) can influence pesticide drift. The applicator must evaluate all factors and make appropriate adjustments when applying this product.

Droplet Size: Use only Medium or coarser spray nozzles according to ASAE (S572) definition for standard nozzles.

Wind Speed: Do not apply at wind speeds greater than 10 mph.

INDUSTRIAL SITES AND NONCROP AREAS

Pramitol 25E can be applied before or up to 3 months after weed emergence. Application rates vary from 4-10 gals. of Pramitol 25E per acre depending on climatic conditions, soil type, the weeds present, and the stage of growth of the weeds. In the following use rates, the higher rates are intended for use on heavier soils where weed growth is heavy and where rainfall is expected to be relatively high. Use higher rates where longer residual control is desired in regions with a long growing season.

For applications to industrial sites, not including treatments made under solid or block paving, limit to 1 application/year. The maximum use rate is 0.20 lbs ai/500 square feet, or the equivalent to a maximum of 18 lbs ai/A.

Although Pramitol 25E has considerable activity through foliar contact, much of its activity is through roots; therefore, **its effectiveness is dependent on rainfall to move it into the root zone. Very dry soil conditions and lack of sufficient rainfall may result in poor weed control.**

For best results, apply Pramitol 25E before weeds emerge or when weeds are young and actively growing.

For control of annual and susceptible perennial weeds and grasses such as downy brome grass, oatgrass, goosegrass, quackgrass, puncturevine, goldenrod, and plantain: Broadcast 4.0 - 6.125 gals. Pramitol 25E in 50 - 100 gals. of water per acre.

For control of hard-to-kill perennial weeds and grasses such as johnsongrass, bindweed, and wild carrot: Broadcast 7.5 - 10 gals. of Pramitol 25E in 50 - 100 gals. of water per acre.

For faster top-kill of existing vegetation, apply Pramitol 25E in diesel oil, fuel oil, or weed oil. Use oils at rates of 100 - 200 gals. per acre. Tall, dense vegetation such as johnsongrass will generally require 150 or more gals. of oil per acre for thorough coverage.

When applying Pramitol 25E to a small area with backpack or pump-up sprayers with capacities of 1 - 3 gals., calibrate the sprayer so that 1 gal. of water covers 500 sq. ft. Then mix 1/2 - 7/8 pt. of Pramitol 25E with water to obtain a total volume of 1 gal. and apply uniformly over a 500 sq. ft. area. For hard-to-kill perennial weeds and grasses, use the higher rate. If green foliage is present, part or all of the water can be substituted with oil to provide burndown.

RESTRICTIONS WHEN USED ON INDUSTRIAL SITES AND NONCROP AREAS: (1) *Feeder roots of desirable plants often extend far beyond the drip line of the branches. Do not apply this product or drain or flush application equipment in locations where the chemical may come into contact with root zones of desirable trees, shrubs, or plants or injury may occur.* (2) *Do not use on land to be cropped.* (3) *Do not use for weed control in greenhouses.*

ASPHALT PAVEMENT

Pramitol 25E may be used to extend the useful life of asphalt pavement by preventing weeds from emerging through it. Pramitol 25E may be applied to the ground before laying asphalt or it may be mixed with cutback asphalts.

Use Pramitol 25E only where the area to be treated has been prepared according to good construction practices. If rhizomes, tubers, or other vegetative parts are present in the site, remove by scalping with a grader blade. Recompaction of the site following disking or plowing will allow good penetration of Pramitol 25E and will help to ensure proper asphalt curing and good weed control.

Pramitol 25E will not control woody vegetation such as small trees, brush, or woody vines. Remove roots of such species from the site before application.

Under Asphalt: Pramitol 25E may be applied to the ground before laying rapid, medium, or slow curing asphalt coatings such as those used on parking lots, highway shoulders and median strips, roadways, and other industrial sites. Apply Pramitol 25E just before laying of the asphalt coating to prevent possible lateral movement of the herbicide by rainfall or other mechanical means. Sprayers should be equipped to provide continuous agitation of the spray mixture during application to ensure application of a uniform spray emulsion.

Apply Pramitol 25E uniformly at the rate of 7.8 gals. per acre (23 oz. per 1,000 sq. ft.) in a minimum of 100 gals. of water. Use the lower rate to control annual and susceptible perennial weeds and grasses such as downy brome grass, oatgrass, goosegrass, quackgrass, puncturevine, goldenrod, and plantain. Use the higher rate to control hard-to-kill perennial weeds and grasses such as johnsongrass, bindweed, and wild carrot.

- Do not use Pramitol 25E under asphalt coatings less than 2 inches thick.
- Limit to 1 application per year.
- The maximum use rate of 0.18 lb ai/500 square feet or the equivalent to a maximum of 16 lbs ai/A.

Mixed with Cutback Asphalt: Pramitol 25E may be mixed with standard and special cutback asphalts (such as RC, MC, and SC) for weed control in areas being stabilized such as highway shoulders, highway median strips, under highway fences and guard rails, along airport runways and lights, soil and small stone aggregates on shoulders, and cracked asphalt surfaces being resurfaced.

Pramitol 25E should be simultaneously mixed with the cutback asphalt as it is being pumped into the applicator or transport truck to assure a homogeneous mix. Temperatures in the applicator or transport truck should not exceed 170°F.

Use Pramitol 25E at the rate of 23 fl. oz. per 1,000 sq. ft. (equivalent to 7.8 gals. per acre of Pramitol 25E). Use the lower rate on ordinary weed and grass complexes such as dallisgrass, King Ranch bluestem, knotroot bristlegrass, and the higher rate where johnsongrass, bermudagrass, or other deep-rooted perennials are present.

In arid areas where deep-rooted perennials are a problem, best results can be obtained by making the application from midsummer through late fall or prior to the rainy season.

RESTRICTIONS WHEN USED UNDER ASPHALT OR MIXED WITH CUTBACK ASPHALT: (1) Do not apply cutback asphalt mixtures containing Pramitol 25E to soil saturated with water. The condition of the soil should be favorable for penetration or proper asphalt curing may be affected. (2) Do not apply Pramitol 25E with asphalt emulsions such as SS. (3) Feeder roots of desirable plants often extend far beyond the drip line of the branches. Do not apply this product or drain or flush application equipment in locations where the chemical may come into contact with root zones of desirable trees, shrubs, or plants or injury may occur. (4) Do not use on land to be croppped. (5) Do not use for weed control in greenhouses.

STORAGE AND DISPOSAL

Do not contaminate water, food, or feed by storage or disposal.

PESTICIDE STORAGE: Store at temperatures above 32°F.

PESTICIDE DISPOSAL: Wastes resulting from use of this product must be disposed of on site or at an approved waste disposal facility.

CONTAINER HANDLING:

Nonrefillable Container (flexible-bag all weights): Nonrefillable container. Do not reuse or refill this container. Offer for recycling if available.

Nonrefillable Container (five gallons or less): Nonrefillable container. Do not reuse or refill this container. Offer for recycling, if available. Clean container promptly after emptying. Triple rinse as follows: Empty the remaining contents into application equipment or a mix tank and drain for 10 seconds after the flow begins to drip. Fill the container ¼ full with water and recap. Shake for 10 seconds. Pour rinsate into application equipment or a mix tank or store rinsate for later use or disposal. Drain for 10 seconds after the flow begins to drip. Repeat this procedure two more times.

LIMITATION OF WARRANTY AND LIABILITY

Read the entire directions for use, conditions of warranties and limitations of liability before using this product. If terms are not acceptable, return the unopened product container at once.

By using this product, user or buyer accepts the following **CONDITIONS, DISCLAIMER OF WARRANTIES and LIMITATIONS OF LIABILITY.**

CONDITIONS: The directions for use of this product are believed to be adequate and must be followed carefully. However, it is impossible to eliminate all risks associated with the use of this product. Crop injury, ineffectiveness or other unintended consequences may result because of such factors as weather conditions, presence of other materials, or the manner of use or application, all of which are beyond the control of Makhteshim Agan of North America, Inc. All such risks shall be assumed by the user or buyer.

DISCLAIMER OF WARRANTIES: To the extent consistent with applicable law, Makhteshim Agan of North America, Inc. makes no other warranties, express or implied, of merchantability or of fitness for a particular purpose or otherwise, that extend beyond the statements made on this label. No agent of Makhteshim Agan of North America, Inc. is authorized to make any warranties beyond those contained herein or to modify the warranties contained herein. To the extent consistent with applicable law, Makhteshim Agan of North America, Inc. disclaims any liability whatsoever for special, incidental or consequential damages resulting from the use or handling of this product.

LIMITATIONS OF LIABILITY: To the extent consistent with applicable law, the exclusive remedy of the user or buyer for any and all losses, injuries or damages resulting from the use or handling of this product, whether in contract, warranty, tort, negligence, strict liability or otherwise, shall not exceed the purchase price paid or at Makhteshim Agan of North America, Inc.'s election, the replacement of product.

Pramitol® is a registered trademark of Makhteshim-Agan of North America Inc.