



# PARAFINE<sup>®</sup> HORTICULTURAL OIL

FOR USE ON CITRUS TREES, APPLE TREES, PALM TREES, WOODY ORNAMENTALS, (as listed on this label) AND VEGETABLES (as listed on this label) TO CONTROL WHITE FLIES, SCALE INSECTS, MEALY BUGS, AND OTHER TYPES OF INSECTS AS LISTED ON THIS LABEL. See DIRECTIONS FOR USE

### ACTIVE INGREDIENT

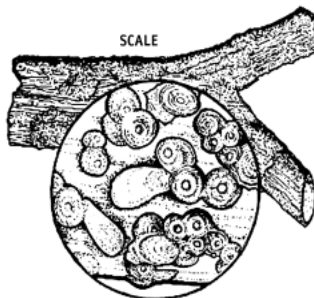
Mineral Oil ..... 98.00%  
(Unulfonated residue not less than 92%)

INERT INGREDIENTS:..... 2.00%

TOTAL: ..... 100.00%

Contains petroleum distillates

The oil in this product meets Florida Citrus Standards FC 435.66



KEEP OUT OF REACH OF CHILDREN

## CAUTION

The specific directions for use of this product are located inside of label.

Follow directions on side of label to open

### Southern Agricultural Insecticides, Inc.

P.O. Box 218  
PALMETTO, FL. 34220  
(941) 722-3285

P.O. Box 429  
HENDERSONVILLE, N.C. 28793  
(828) 692-2233

P.O. Box 85  
BOONE, N.C. 28607  
(828) 264-8843

EPA Reg. No. 829-83

J10

EPA Est. No. 829-FL-1

Net Contents:

1 Gallon  
(3.785 liters)

2.5 Gallons  
(9.46 liters)

30 Gallons  
(113.55 liters)

Southern  
Agricultural Insecticides, Inc.  
P.O. Box 218  
Palmetto, FL 34220

### FIRST AID

**IF SWALLOWED:** Immediately call a poison control center or doctor. Do not induce vomiting unless told to do so by a poison control center or doctor. Do not give **any** liquid to the person. Do not give anything by mouth to an unconscious person **IF IN EYES:** Hold eye open and rinse slowly and gently with water for 15-20 minutes. Remove contact lenses, if present, after the first 5 minutes, then continue rinsing eye. Call a poison control center or doctor for treatment advice. **IF ON SKIN OR CLOTHING:** Take off contaminated clothing. Rinse skin immediately with plenty of water for 15-20 minutes. Call a poison control center or doctor for treatment advice. **IF INHALED:** Move person to fresh air. If person is not breathing, call 911 or an ambulance, then give artificial respiration, preferably mouth-to-mouth if possible. Call a poison control center or doctor for treatment advice.

Have product container or label with you when calling a poison control center or doctor or going for treatment. For information on this pesticide product (including health concerns, medical emergencies, or pesticide incidents), call the National Pesticide Information Center at 1-800-858-7378

**Note to Physician:** Contains petroleum distillate and may pose an aspiration pneumonia hazard.

### PRECAUTIONARY STATEMENTS HAZARDS TO HUMANS AND DOMESTIC ANIMALS

**CAUTION: Harmful** if swallowed, inhaled, or absorbed through the skin. Do not get in eyes, on skin, or on clothing. Avoid breathing spray mist. Wash contaminated clothing and wash before reuse. Wash thoroughly with soap and water after handling.

#### PERSONAL PROTECTIVE EQUIPMENT (PPE)

Some material that are chemical-resistant to this product are listed below. If you want more options follow the instructions for Category E on an EPA chemical resistance category selection chart. Applicators and other handlers must wear:

1. Long-sleeved shirt and long pants. 2. Chemical resistant gloves, made from barrier laminate, nitrile rubber, neoprene rubber, or viton. 3. Shoes plus socks.

Follow manufacturer's instructions for cleaning and maintaining PPE. If no such instructions for washables, use detergent and hot water. Keep and wash PPE separately from other laundry. Discard clothing and other absorbent material that have been drenched or heavily contaminated with the product concentrate. Do not reuse them.

#### USER SAFETY RECOMMENDATIONS

Users should: Wash hands before eating, drinking, chewing gum, using tobacco or using the toilet. Remove clothing/PPE immediately if pesticide gets inside. Then wash thoroughly and put on clean clothing. Remove PPE immediately after handling this product. Wash the outside of gloves before removing. As soon as possible, wash thoroughly and change into clean clothing.

#### ENVIRONMENTAL HAZARDS

This product is toxic to fish. Do not apply directly to water, or to areas where surface water is present or to intertidal areas below the mean high water mark. Do not contaminate water when disposing of equipment washwater or rinsate. Drift and runoff may be hazardous to aquatic organisms in water adjacent to treated areas.

#### DIRECTIONS FOR USE

It is a violation of Federal law to use this product in a manner inconsistent with its labeling.

**Note:** Do not apply this product through any type of Irrigation System.

Aerial application of this product is prohibited. For any requirements specific to your State or Tribe, consult the agency responsible for pesticide regulation.

#### AGRICULTURAL USE REQUIREMENTS

Use this product only in accordance with its labeling and with the Worker Protection Standard, 40 CFR Part 170. This Standard contains requirements for the protection of agricultural workers on farms, forests, nurseries, and greenhouses and handlers of agricultural pesticides. It contains requirements for training, decontamination, notification, and emergency assistance. It also contains specific instructions and exceptions pertaining to the statements on this labeling about personal protective equipment (PPE), restricted-entry intervals. The requirements in this box only apply to uses of this product that are covered by the Worker Protection Standard.

Do not enter or allow worker entry into treated areas during the restricted entry interval (REI) of 12 hours. PPE required for early entry to treated areas that is permitted under the Worker Protection Standard and that involves contact with anything that has been treated, such as plants, soil, or water, is: (1) Coveralls, (2) Chemical-resistant gloves made of any waterproof material, and (3) Shoes plus Socks.

#### NON-AGRICULTURAL USE REQUIREMENTS

The requirements in this box apply to uses of this product that are NOT within the scope of the Worker Protection Standard for agricultural pesticides (40 CFR Part 170). The WPS applies when this product is used to produce agricultural plants on farms, forests, nurseries, or greenhouses. Do not enter or allow others to enter until spray has dried.

#### RESTRICTIONS AND PRECAUTIONS

Do not apply this product in a way that will contact workers or other persons, either directly or through drift. Only protected handlers may be in the area during application. Mix thoroughly the proper amount of oil and water in the spray tank and continue agitation during spraying. In general, woody ornamentals are more tolerant to oil sprays than tender succulent plants. If oil applications must be made to tender plants, they may be syringed off with clear water about an hour after applying oil.

Do not apply oil sprays to plants that are wilting or are near wilting from lack of moisture. Do not apply oil with sulfur or lime sulfur. Do not apply an oil spray within 3 weeks before or after an application of sulfur or lime sulfur. Avoid spraying during periods of excessively high temperature (above 90°F). Do not exceed three oil sprayings per year. Do not use more than the specified dosage, for to do so may cause plant injury. Do not allow the mixture to stand.

**EFFICACY CONSIDERATIONS**

For scalcicides to be effective, thorough coverage is essential. Better scale control can be anticipated when applications are made when scale insects are in the crawler stage.

**SPRAY DRIFT MANAGEMENT**

A variety of factors including weather conditions (e.g., wind direction, wind speed, temperature, relative humidity) and method of application (e.g. ground, airblast) can influence pesticide drift.

**Wind Speed:** Do not apply at wind speeds greater than 15 mph at the application site.

**Temperature Inversions:** If applying at wind speeds less than 3 mph, the applicator must determine if a) conditions of temperature inversion exist, or b) stable atmospheric conditions exist at or below nozzle height. Do not make applications into areas of temperature inversions or stable atmospheric conditions

**Droplet Size:** Apply as a medium or coarser spray (ASABE standard 572), and the minimum volume mean diameter (VMD) for spinning atomizer nozzles.

**Ground Applications:** Apply using a nozzle height of no more than 4 feet above the ground or canopy. Applications must be consistent with the limitations for wind speed, temperature inversions, and droplet size indicated above.

**Airblast Applications:** For airblast applications, turn off outward-pointing nozzles at row ends and when spraying outer row. To minimize spray loss over the top in orchard applications, spray must be directed into the canopy. Applications must be consistent with the limitations for wind speed, temperature inversions, and droplet size indicated above.

**NON-DORMANT USES (WHEN PLANT IS ACTIVELY GROWING)**

This includes all Florida uses as well as uses on actively growing plants (non-dormant) in other Southeastern areas. Do not use when temperatures fall below 42°F within 3 weeks of application. If a second application of oil is necessary, do not apply within six weeks after first oil spray. Avoid spraying open blooms.

<b>PLANT</b>	<b>INSECT</b>	<b>Qts. per 100 Gal.</b>	<b>Tbls. per Gallon</b>	<b>Note</b>
Azaleas	Azalea Lace Bug, White Fly Larva	5	3 1/2	2 applications after blooming period.
Camellia	Scales, White Fly Larva, Citrus Mealy Bug, Soft Scales	5	3 1/2	2 applications at close of blooming period.
Citrus	Florida Red Scale, Purple Scale, Spider Mite, White Fly Larvae.	5	4	Preferably in June or July.
Crotons	Soft Scales, Meaty Bug	4	2	2 applications, if needed.

<b>PLANT</b>	<b>INSECT</b>	<b>Qts. per 100 Gal.</b>	<b>Tbls. per Gallon</b>	<b>Note</b>
Gardenia	White Fly Larvae, Soft Scales, Citrus Mealy Bug	5	3 1/2	2 applications preferably blooming period.
Holly	White Fly Larvae	5	3 1/2	2 applications.
Hibiscus	White Fly Larvae	4	2	Make a second application only if needed.
Ixora	Soft Scales, Mealy Bug	5	4	2 applications as needed, preferably after blooming.
Ivy	Oleander Scale	2	1	Make a second application preferably spring or fall.
Ligustrum	White Fly Larva Soft Scales	5	3 1/2	Make a second application only if needed.
Mango	Florida Red Scale, Mango Scale	5	3 1/2	Make a second application only if needed.
Palm, outdoor	Soft Scales, Mealy Bug	3	2	Rinse with clear water 1 1/2 to 2 hours after applying.
Pittosporum	Cottony Cushion Scale	5	3	2 applications as needed.
Viburnum	Soft Scale	5	3	2 applications as needed.

For application to Citrus, do not exceed 159 pounds of active ingredients per acre, in a maximum of 1,500 gallons of spray mix.

For use on the types of vegetables listed below, do not exceed 3 applications in a growing season and do not apply at intervals of less than 14 days. On these vegetable crops, this product controls Aphids, Mites, Beetle Larvae, Leafminers, Thrips, Leafhopper, and Whitefly (except for avocado as noted in table below).

<b>PLANT</b>	<b>INSECT</b>	<b>Qts. per 100 Gal.</b>	<b>Tbls. per Gallon</b>
Avocado	Wax Scale, White Fly, Latania Scale	5	3 1/2
Beans		4-8	2 1/2-5
Beats		4-8	2 1/2-5
Cabbage		4-8	2 1/2-5
Cauliflower		4-8	2 1/2-5

(Vegetables continued)

PLANT	INSECT	Qts. per	Tbls. per	Note
		100 Gal.	Gallon	
Celery		4-8	2 1/2 -5	
Corn		4-8	2 1/2 -5	
Cucurbit		4-8	2 1/2 -5	
Eggplant		4-8	2 1/2 -5	
Melon		4-8	2 1/2 -5	
Pepper		4-8	2 1/2 -5	
Squash		4-8	2 1/2 -5	
Tomato		4-8	2 1/2 -5	
Tobacco		4-8	2 1/2 -5	

### DORMANT USES

Dormant oil sprays are applied during the winter and early spring in those areas where many plants reach true dormancy (not Peninsular Florida). Dormant oil sprays should not be applied in freezing weather. Preferably, temperatures should be above 40°F. Dormant sprays are generally more effective in the spring just before new growth starts.

PLANT	INSECT	Qts. per	Tbls. per	Note
		100 Gal.	Gallon	
Apples	Scales	8	6	Before visible growth starts.
Azalea	Bark Scales	6	4	On early blooming varieties, apply during warm weather in late fall.
Camellia	Scales	6	4	Supplement to summer applications.
Holly	Holly Scale	8	6	In spring before buds open.
Pittosporum	Cottony Cushion Scale	8	6	2 applications.
Privet	White Peach Scale	12	8	2 applications 2 weeks apart.
Pyracantha	Wax Scale	12	8	Before visible growth starts.
Rose	Rose Scale	6	4	Before visible growth starts.

### STORAGE AND DISPOSAL

Do not contaminate water, food, or feed by storage or disposal.

(FOR USE ON CONTAINERS 5 GALLONS OR LESS)

**PESTICIDE STORAGE:** Open dumping is prohibited. Store only in original container. Do not reuse empty container. If a leaky container must be contained within another, mark the outer container to identify the contents. Store pesticides away from food, pet food, feed, seed, fertilizers, and veterinary supplies. Keep this product under locked storage sufficient to make it inaccessible to children or persons unfamiliar with its proper use.

(Continued)

**PESTICIDE DISPOSAL:** Pesticide wastes are toxic. Improper disposal of excess pesticide, spray mixture, or rinsate is a violation of Federal law. If these wastes cannot be disposed of by use according to label instructions, contact your State Pesticide or Environmental Control Agency, or the Hazardous Waste representative at the nearest EPA Regional Office for guidance.

**CONTAINER DISPOSAL:** Nonrefillable container. Do not reuse or refill this container. Offer for recycling if available. Triple rinse container (or equivalent) promptly after emptying. Triple rinse as follows: Empty the remaining contents into application equipment or a mix tank and drain for 10 seconds after the flow begins to drip. Fill the container 1/4 full with water and recap. Shake for 10 seconds. Pour rinsate into application equipment or a mix tank or store rinsate for later use or disposal. Drain for 10 seconds after the flow begins to drip. Repeat this procedure two more times. Then offer for recycling or reconditioning, or puncture and dispose of container in a sanitary landfill, or incinerate if allowed by State and local authorities.

(FOR USE ON NONREFILLABLE CONTAINERS 5 GALLONS OR MORE)

**PESTICIDE STORAGE:** Open dumping is prohibited. Store only in original container. Do not reuse empty container. If a leaky container must be contained within another, mark the outer container to identify the contents. Store pesticides away from food, pet food, feed, seed, fertilizers, and veterinary supplies. Keep this product under locked storage sufficient to make it inaccessible to children or persons unfamiliar with its proper use.

**PESTICIDE DISPOSAL:** Pesticide wastes are toxic. Improper disposal of excess pesticide, spray mixture, or rinsate is a violation of Federal law. If these wastes cannot be disposed of by use according to label instructions, contact your State Pesticide or Environmental Control Agency, or the Hazardous Waste representative at the nearest EPA Regional Office for guidance.

**CONTAINER DISPOSAL:** Nonrefillable container. Do not reuse or refill this container. Offer for recycling if available. Triple rinse container (or equivalent) promptly after emptying. Triple rinse as follows: Empty the remaining contents into application equipment or a mix tank. Fill the container 1/4 full with water. Replace and tighten closure. Tip container on its side and roll it back and forth, ensuring at least one complete revolution, for 30 seconds. Stand the container on its end and tip it back and forth several times. Turn the container over onto its other end and tip it back and forth several times. Empty the rinsate into application equipment or a mix tank or store rinsate for later use or disposal. Repeat this procedure two more times. Then offer for recycling or reconditioning, or puncture and dispose of container in a sanitary landfill, or incinerate if allowed by State and local authorities.

### WARRANTY STATEMENT

Follow instructions carefully. Timing, method of application, weather conditions, mixtures with other chemicals and other influencing factors in the use of this product are beyond control of the seller.

To the extent consistent with applicable laws buyer assumes all risks of use, storage, or handling not in strict accordance with the directions and precautions given herewith.