

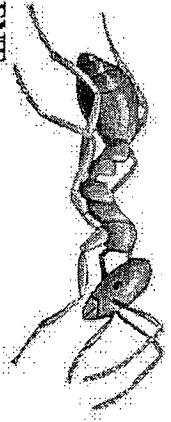
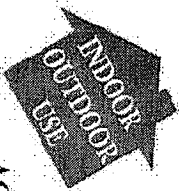
MYSTIC

Home Pest Control

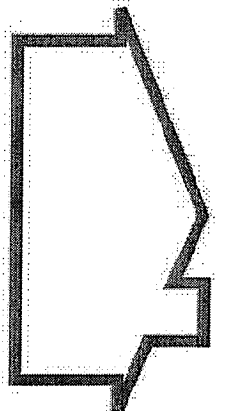
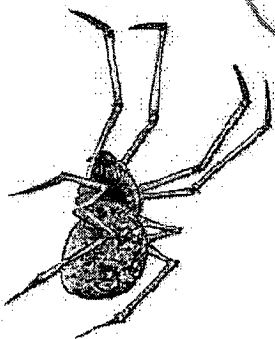
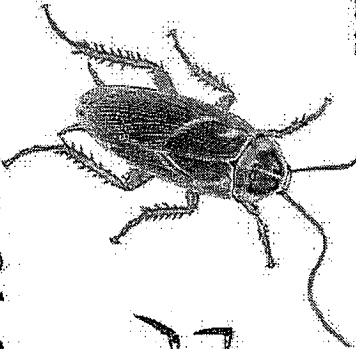
(Formula 200)

R · e · a · d · y · t · o · U · s · e

- Kills:*
- Cockroaches
 - Ants
 - Fleas
 - Carpenter Ants
 - Spiders
 - Ticks
 - Lice
 - Silverfish
 - Pantry Pests
 - Other Pests Listed On The Label



ACTIVE INGREDIENT	
Deltamethrin	0.03%
OTHER INGREDIENTS	99.97%
TOTAL	100.00%
EPA Est. No. 4-NY-1	EPA Reg. No. 4-462-36272



- Contact kill gives you immediate results when spraying insects directly, while residual activity kills insects when they return to treated areas

KEEP OUT OF REACH OF CHILDREN

CAUTION

(See Back Panel for Additional Precautionary statements)

Net Contents 32 FL. OZ. (1 Qt.) (946 ML.)

Distributed By:

MYSTIC CHEMICAL PRODUCTS
 3561 West 105th Street • Cleveland, Ohio 44111

XXXXXXXXXX

MYSS527

HOME PEST CONTROL READY TO USE

FOR INDOOR AND OUTDOOR USE

- WATER-BASED
- ODORLESS
- KILLS ON CONTACT
- EASY-TO-USE
- KILLS ROACHES, ANTS • FOR USE ON HOUSEPLANTS & FLEAS ON CONTACT • NO OILY RESIDUE
- KILLS SPIDERS, CENTIPEDES & SCORPIONS
- LONG-LASTING

KILLS: FIREBRATS, BOOKLICE, SILVERFISH, CRICKETS, SOWBUGS, CENTIPEDES, BEDBUGS, SCORPIONS, HOUSEFLIES, GNATS, MOSQUITOES, SMALL FLYING MOTHS, PANTRY PESTS, CARPET BEETLES, DEERFLIES, HORSEFLIES, WASPS, MUD DAUBERS, YELLOW JACKETS, BEES, HORNETS AND TERMITES.

Store and transport in an upright position.
Buyers Guarantee Limited to Label Claims.
©Bonide Products, Inc. All Rights Reserved

It is a violation of Federal law to use this product in a manner inconsistent with its labeling.

DIRECTIONS FOR USE

General Information: Hold container upright. Do not spray up into air. Apply to surfaces only as a spot and crack & crevice treatment. Hold approximately 12 inches from surface to be sprayed. Squeeze trigger to spray until surface is slightly moist but not to the point of runoff. Over application may cause damage. Test in an inconspicuous area before applying.

Do not allow children or pets to contact treated surfaces until spray has dried.

This product's long-lasting action keeps on killing German Cockroaches for up to 12 months and Flies for up to 150 days after you spray. More frequent applications may be necessary on concrete surfaces. Check these areas in 4 weeks and retreat if insect activity continues. Contact kill gives you immediate results when spraying insects directly, while residual activity kills insects when they return to treated areas.

This product is intended to be used in and around residences and their immediate surroundings such as (but not limited to): apartments, atriums, attics, automobiles, basements, bathrooms, boats, cabins, campers, carports, cat sleeping quarters, clothes storage, condominiums, decks, dens, driveways, garages, gazebos, homes, kitchens, lanais, living rooms, parlors, patios, pet sleeping areas, play rooms, porches, recreational vehicles, rooms, solariums, storage areas, sun rooms, utility rooms and verandas. Do not use in commercial food handling establishments, restaurants or other places where food is commercially prepared or processed.

INDOORS

Application is prohibited directly into sewers or drains, or to any area like a gutter where drainage to sewers, storm drains, water bodies, or aquatic habitat can occur. Do not allow the product to enter any drain during or after application.

Cockroaches (Including Adult And Immature Stages Of Both Non-Resistant And Organophosphate And Carbamate Resistant Strains), Ants, Boxelder Bugs, Centipedes, Crickets, Dermestids, Firebrats, Fleas, Palmetto Bugs, Silverfish, Sowbugs, Ticks and Waterbugs: Apply as a spot and crack & crevice treatment to areas where these pests crawl and hide, especially in hidden areas around sinks and storage areas, behind baseboards, around doors and windows, behind and under refrigerators, cabinets, sinks and stoves, the underside of shelves, drawers, bookcases, and similar areas. Cover all food handling surfaces and cover or remove all food and cooking utensils or wash thoroughly after treatment. Exposed food should be covered or removed. Repeat as necessary but not more than once per week.

ROACHES

Spray in cracks and crevices, around baseboards and other hiding places.

ANTS

Spray ant trails and around doors and windows and other places where ants enter the house. Repeat as necessary but not more than once per week.

CARPENTER ANTS

For effective control, locate and treat nests and surrounding areas. Apply around doors and windows and other places where ants enter premises and where they crawl and hide. Spray into infested wood through existing openings.

TICKS (INCLUDING DEER TICKS WHICH MAY CARRY LYME DISEASE) AND FLEAS ON SURFACES

Remove pet bedding and destroy or clean thoroughly. Spray pet resting quarters. Adult Fleas and Larvae contacted by spray will be killed. Put fresh bedding down once spray has dried. Do not spray animals directly. For best results, pets should be treated with an appropriate flea and/or tick control product registered for use on pets before allowing them to return to the treated area. Spray rugs and carpets where infestations are bad. Delicate fabrics should be tested for staining in an inconspicuous area prior to use.

SPIDERS

Apply along and behind baseboards, to window and door frames, corners, pipes, storage localities, attics, crawl spaces and other areas over which these pests may crawl.

CENTIPEDES, GROUND BEETLES, PILIBUGS, SOBBUGS, SCORPIONS AND TICKS

Apply around doors and windows and other places where these pests may enter premises. Treat baseboards, storage areas and other locations where these pests are found.

SILVERFISH, CRICKETS, SPIDERS

Apply to areas infested by these pests.

FLYING INSECTS

Houseflies, Gnats, Mosquitoes and Small Flying Moths: Spray localized resting areas, such as under eaves, porches, inside surfaces of window and door frames, surfaces around light fixtures and cords, railings, etc. and anywhere these insects may rest. Insects coming to rest on treated surfaces will be killed.

HORSE STABLES

To Control Stable Flies, Horn Flies, Houseflies, Face Flies, Horse Flies, Deer Flies, Mosquitoes and Gnats. Apply thoroughly to surfaces until wet. Insects coming to rest on treated surfaces will be killed or repelled. Repeat treatment as necessary but not more than once per week. Do not spray animals or humans, or apply to animal feed or watering equipment.

PANTRY PESTS

Grain Beetles (Rusty, Merchant and Saw-Toothed), Flour Beetles (Red and Confused), Chocolate Moths, Cigarette Beetles, Clover Mites, Cluster Flies, Drugstore Beetles, Elmleaf Beetles, Rice Weevils, Lesser Grain Borers, Spider Beetles and Tobacco Moths: Treat exposed stages. Remove all food-stuffs, utensils and shelf paper from area to be treated. Discard used shelf paper and any infested foodstuffs. Apply spray to shelves and in cracks and crevices behind and under cupboards and cabinets. Allow to dry prior to replacement of shelf paper, food and utensils. Wash any exposed food handling surfaces and utensils before use.

CARPET BEETLES (BLACK, FURNITURE AND VARIED)

Spray on and under edges of floor coverings, under rugs and furniture and in closets or other localities where these insects are found.

WEBBING CLOTHES MOTHS

Use this product as a crack and crevice treatment in closets and other storage areas where these pests are found. This is an adjunct treatment and will not control moth larvae already on clothes. Do not apply to clothing.

BEDBUGS AND LICE

Remove linens and wash before reuse. Lightly spray mattresses, especially tufts, folds and edges. Apply to the interior of the frame. Allow to dry before remaking bed. Also, treat your yard with a product registered for yard application.

OUTDOORS

Remove all exposed food and cooking utensils. Cover all food handling surfaces or wash thoroughly after treatment and before use. Do not use on edible crops. For outdoor use only as an aid in controlling these insects. Point sprayer away from face. Hold sprayer on a slight downward angle, approximately 12 inches from surface to be sprayed. Spray with wind if breeze is blowing. Do not contaminate fish ponds or apply directly to water.

Do not water the treated area to the point of run-off. Do not make applications during rain. All outdoor applications must be limited to spot or crack-and-crevice treatments only, except for the following permitted uses:

(1) Treatment to soil or vegetation around structures;

(2) Applications to lawns, turf, and other vegetation;

(3) Applications to building foundations, up to a maximum height of 3 feet.

Other than applications to building foundations, all outdoor applications to impervious surfaces such as sidewalks, driveways, patios, porches and structural surfaces (such as windows, doors, and eaves) are limited to spot and crack-and-crevice applications only.

PESTS ON OUTSIDE SURFACES OF BUILDINGS

For control of building infestation to **Ants, Clover Mites, Crickets and Sowbugs (Pillbugs)**. Spray foundation of building where insects are active and may find entrance up to a height of 2 to 3 feet. Apply as a spot or crack-and-crevice spray to other outside surfaces of buildings where insects tend to congregate. Spray areas include (but are not limited to) screens, window frames, eaves, porches, patios, garages and refuse dumps. Repeat treatment as necessary but not more than once per week.

CRAWLING INSECTS

Ants, Cockroaches (including Asian Cockroaches), Centipedes, Crickets, Mole Crickets, Waterbugs and Silverfish. Hold can 12 to 18 inches from surface to be treated and apply as a spot spray in infested surface of patio or picnic areas, hitting as many insects as possible. Spray to slightly moisten the surface. Spray infested surface of patio or picnic area. Also spray legs of tables and chairs.

ANTS

Spray freely around ant trails and hills. Spray around nests hidden under steps, brickwork, concrete, etc. Break apart accessible nests and spray freely on and around debris. Repeat as necessary but not more than once per week.

LONE STAR TICKS, DOG TICKS, CRICKETS AND FLEAS

Apply thoroughly to infestation in bushes, grass or weeds.

WASPS, HORNETS, YELLOW JACKETS AND BEES

Spray nests and other surfaces where bees may rest. Aim spray at nest openings. Applications should be made late in the evening when insects are at rest.

FLYING INSECTS

Houseflies, Gnats, Mosquitoes and Small Flying Moths: Apply as a spot or crack-and-crevice spray to outside surfaces of window and door frames and other areas where these pests may enter the home. Also spray localized resting areas, such as under eaves, porches, surfaces around light fixtures and cords, railings, etc. where these insects may rest. Insects coming to rest on treated surfaces will be killed.

TERMITES, CARPENTER ANTS AND CARPENTER BEES (FOR LOCALIZED CONTROL ONLY.)

Apply this product to voids or channels in damaged wood of a structure, or to cracks, crevices and spaces in and between wooden portions of a structure or between wood and the foundation, in locations vulnerable to attack such as crawl spaces. For **Termites**, the purpose of such applications is to kill workers or winged forms which may be present in the treated areas at the time of application. Not recommended as sole protection against termites. For active infestations, get a professional inspection. Such applications are not a substitute for mechanical alteration, soil treatment or foundation treatment but are merely a supplement. For severe termite infestation, contact a professional pest control operator in your area.

HOUSE PLANTS

To control Aphids, Japanese Beetles, Lace Bugs, Leafminers, Mealy Bugs, Mites and Spider Mites on house plants. Prior to spraying, remove plants from living and eating areas. Put in an area not likely to come in contact with pets, children or food. Plants can be returned to original location when leaves dry. If plants cannot be moved, cover or remove exposed food and food handling surfaces. Avoid spraying surrounding areas. Apply spray to upper and lower surfaces of foliage. Avoid wetting blossoms if possible. Repeat applications as necessary but not more than once per week.

FOR CONTROL OF ORNAMENTAL GARDEN INSECTS

For use on roses, dahlias, asters and other ornamentals to kill Japanese Beetles, hit by spray, as well as Whiteflies, Aphids, Armyworms, Lace Bugs, Mealy Bugs, Exposed Thrips, Pavement Ants, Spiders, Spider and Red Mites, Clover Mites and Leafminers.

Not for use on plants grown for sale or other commercial use.

May be used on plants, as well as a multi-purpose spray in small ornamental gardens and for spot treatments to prevent insects from spreading into large garden areas. May also be used on other plants such as African violets, asters, azaleas, begonias, camellias, carnations, chrysanthemums, delphiniums, dogwood, English ivy, euonymus, fuschia, geraniums, crassula, grape vine, Kentia palm, laurel, marigolds, rhododendrons, rubber plants, snapdragons, stocks, wandering Jews and zinnias.

When spraying plants, do not operate closer than 18 inches. Use sweeping motion. Be cautious about wetting tender foliage, young plants and new growth. Do not spray plants when temperatures exceed 90°F. Over application may cause damage. **DO NOT apply to vegetable plants or other plants used for food.** Spray insects directly whenever possible. Repeat treatment as necessary but not more than once per week.

STORAGE AND DISPOSAL

Pesticide Storage: Store and transport in an upright position in a cool, dry area away from children and pets and away from heat, sparks and open flame. Protect from freezing. Store above 32°F. Do not transport or store below 32°F (0°C). If freezing occurs, allow product to thaw and shake well before using.

STORAGE AND DISPOSAL Cont.
Some product separation may occur on freezing which is reversible on shaking. Freezing does not adversely affect this product performance.
Pesticide Disposal: If partly filled: Call your local solid waste agency or for disposal instructions. Never place unused product down any indoor or outdoor drain.
Container Disposal: If empty: Nonrefillable container. Do not reuse or refill this container. Place in trash or offer for recycling if available.

PRECAUTIONARY STATEMENTS
Hazards To Humans & Domestic Animals
CAUTION: Contact with product may result in transient tingling and reddening of the skin. Avoid contact with skin or clothing. Wash thoroughly with soap and water after handling and before eating, drinking, chewing gum, or using tobacco.
Environmental Hazards
This product is extremely toxic to fish and aquatic invertebrates. To protect the environment, do not allow pesticide to enter or run off into storm drains, drainage ditches, gutters or surface waters. Applying this product in calm weather when rain is not predicted for the next 24 hours will help to ensure that wind or rain does not blow or wash pesticide off the treatment area. This product is highly toxic to bees exposed to direct treatment or residues on blooming crops or weeds. Do not apply this product or allow it to drift to blooming crops or weeds if bees are visiting the treatment area.
Physical or Chemical Hazards
Do not apply this product in or on electrical equipment due to possibility of shock hazard.

Note: Seller warrants that this product complies with the specifications expressed in this label. To the extent consistent with applicable law, Seller makes no other warranties, and disclaims all other warranties, express or implied, including but not limited to warranties of merchantability and fitness for the intended purpose. To the extent consistent with applicable law, Seller's liability or default, breach or failure under this label shall be limited to the amount of the purchase price. To the extent consistent with applicable law, Seller shall have no liability for consequential damages.