

# Conrac® All-Weather Blox

[Alternate Brand Name] **Ratrac® Blox**

**KILLS RATS, MICE, AND MEADOW VOLES\***

**KILLS WARFARIN RESISTANT NORWAY RATS**

Norway rats, roof rats, and house mice may consume a lethal dose in one night's feeding with the first dead rodents appearing four or five days after feeding begins.

**ACTIVE INGREDIENT**

Bromadiolone (CAS # 28772-56-7)	.....	0.005%
OTHER INGREDIENTS†	.....	<u>99.995%</u>
<b>TOTAL</b>	.....	<b>100.00%</b>

†Contains Denatonium Benzoate

EPA REG. NO. 12455-79

EPA EST. NO. 12455-WI-1<sup>k</sup>

EPA EST. NO. 12455-WI-2<sup>p</sup>

EPA EST. NO. 12455-WI-3<sup>w</sup>

[superscript is first letter of the lot number]

## KEEP OUT OF REACH OF CHILDREN CAUTION

**NET CONTENTS:** 10 g Block / 726 – 2268 Blocks

*Alternate Sizes:* 28 g Block / 259 – 816 Blocks

**NET WEIGHT:** 16 to 50 lbs. (7.26 – 22.68 kg)

**Manufactured By:**



**Bell Laboratories, Inc.**  
3699 Kinsman Blvd.  
Madison, WI 53704

**Batch Code:**

**[For Pest Control Operator Label: Add the following for packages containing less than 16 lbs. of bait:]**

**IT IS ILLEGAL TO SELL THIS PRODUCT IN PACKAGES HOLDING LESS THAN  
16 POUNDS OF BAIT**

See back [bottom] [and] [side] panel[s] for  
First Aid, additional Precautionary Statements, and Directions for Use.

\*Not permitted for use against the following species in California: Cotton rat, Eastern harvest mouse, Golden mouse, Polynesian rat, Meadow vole, White-throated woodrat, Southern plains woodrat, and Mexican woodrat

***Bold, italicized text is information for the reader and is not part of the label.***

[Bracketed information is optional text.]

Text separated by / denotes and/or options.

<b>FIRST AID</b> <b>HAVE LABEL WHEN OBTAINING TREATMENT ADVICE</b>	
<b>If Swallowed:</b>	<ul style="list-style-type: none"><li>• Call a poison control center, doctor, or <b>1-877-854-2494</b> immediately for treatment advice.</li><li>• Have person sip a glass of water if able to swallow.</li><li>• Do not induce vomiting unless told to do so by the poison control center or doctor.</li><li>• Do not give anything by mouth to an unconscious person.</li></ul>
<b>If on Skin or Clothing:</b>	<ul style="list-style-type: none"><li>• Take off contaminated clothing.</li><li>• Rinse skin with plenty of cool water for 15-20 minutes.</li><li>• Call a poison control center or doctor immediately for treatment advice.</li></ul>
<b>If in Eyes:</b>	<ul style="list-style-type: none"><li>• Hold eye open and rinse slowly and gently with water for 15-20 minutes.</li><li>• Remove contact lenses, if present, after the first 5 minutes, then continue rinsing eye.</li><li>• Call a poison control center or doctor immediately for treatment advice.</li></ul>
<b>NOTE TO PHYSICIAN</b> If swallowed or absorbed through the skin, this material may reduce the clotting ability of the blood and cause bleeding. If ingested, administer Vitamin K <sub>1</sub> intramuscularly or orally. Repeat as necessary based on monitoring of prothrombin times.	
<b>TREATMENT FOR PET POISONING</b> If an animal eats this bait, call a veterinarian or <b>1-877-854-2494</b> at once.	
<b>NOTE TO VETERINARIAN</b> For animals ingesting bait and/or showing poisoning signs (bleeding or elevated prothrombin times), give Vitamin K <sub>1</sub> . If needed, check prothrombin times every 3 days until values return to normal (up to 30 days). In severe cases, blood transfusions may be needed.	

### **PRECAUTIONARY STATEMENTS**

#### **Hazards to Humans and Domestic Animals**

**CAUTION:** Harmful if swallowed or absorbed through the skin. Causes moderate eye irritation. Keep away from children, domestic animals and pets. Do not get in eyes, on skin, or on clothing. All handlers (including applicators) must wear long pants, shoes, socks, and waterproof gloves. Any person who retrieves carcasses or unused bait following application of this product must wear waterproof gloves.

#### **User Safety Requirements**

Follow manufacturer's instruction for cleaning/maintaining PPE. If no such instructions for washables exists, use detergent and hot water. Keep and wash PPE separately from other laundry. Remove PPE immediately after handling this product. Wash the outside of gloves before removing them. As soon as possible, wash hands thoroughly after applying bait and before eating, drinking, chewing gum, using tobacco or using the toilet and change into clean clothing.

***Bold, italicized text is information for the reader and is not part of the label.***

[Bracketed information is optional text.]

Text separated by / denotes and/or options.

## ENVIRONMENTAL HAZARDS

This product is extremely toxic to fish, birds and other wildlife. Dogs and predatory and scavenging mammals and birds might be poisoned if they feed upon animals that have eaten this bait. Do not apply this product directly to water or to areas where surface water is present or to intertidal areas below the mean high water mark. Runoff also may be hazardous to aquatic organisms in water adjacent to treated areas. Do not contaminate water when disposing of equipment wash water or rinsate.

## DIRECTIONS FOR USE

It is a violation of Federal law to use this product in a manner inconsistent with its labeling.

**READ THIS LABEL:** Read this entire label and follow all use directions and use precautions. Use only for sites, pests, and application methods described on this label.

### IMPORTANT:

Do not expose children, pets, or nontarget animals to rodenticides. To help to prevent exposure:

1. Store unused product out of reach of children and pets.
2. Apply bait in locations out of reach of children, pets, domestic animals and nontarget wildlife, or in tamper-resistant bait stations. These stations must be resistant to destruction by dogs and by children under six years of age, and must be used in a manner that prevents such children from reaching into bait compartments and obtaining bait. If bait can be shaken from bait stations when they are lifted, units must be secured or otherwise immobilized. Stronger bait stations are needed in areas open to hooved livestock, raccoons, bears, or other potentially destructive animals, or in areas prone to vandalism.
3. Dispose of product container and unused, spoiled, or unconsumed bait as specified on this label.

**Bait stations are mandatory for outdoor, above-ground use. Tamper-resistant bait stations must be used wherever children, pets, non-target mammals, or birds may have access to the bait placement location.**

### USE RESTRICTIONS:

This product may only be used to control the following rodent pests in and around man-made structures: House mouse (*Mus musculus*), Norway rat (*Rattus norvegicus*), Roof rat (*Rattus rattus*), Cotton mouse (*Peromyscus gossypinus*), Cotton rat\* (*Sigmodon hispidus*), Deer mouse (*Peromyscus maniculatus*), Eastern harvest mouse\* (*Reithrodontomys humuli*), Golden mouse\* (*Ochrotomys nuttalli*), Polynesian rat\* (*Rattus exulans*), Meadow vole\* (*Microtus pennsylvanicus*), White-footed mouse (*Peromyscus leucopus*), White-throated woodrat\* (*Neotoma albigula*), Southern plains woodrat\* (*Neotoma micropus*), and Mexican woodrat\* (*Neotoma mexicana*). This product must be used in and within 100 feet of man-made structures constructed in a manner so as to be vulnerable to commensal rodent invasions and/or to harboring or attracting rodent infestations. Examples of such structures include homes and other permanent or temporary residences, food processing facilities, industrial and commercial buildings, trash receptacles, agricultural and public buildings, transport vehicles (ships, trains, aircraft), docks and port or terminal buildings and related structures around and associated with these sites. Fence and perimeter baiting, beyond 100 feet from a structure as defined above, is prohibited. This product must not be applied directly to food or feed crops.

Burrow baiting with Contra<sup>®</sup> All-Weather Blox [This Product] is prohibited.

***Bold, italicized text is information for the reader and is not part of the label.***

[Bracketed information is optional text.]

Text separated by / denotes and/or options.

Do not place bait near or inside ventilation duct openings. Do not contaminate water, food, feedstuffs, food or feed handling equipment, or milk or meat handling equipment or surfaces that come into direct contact with food. When used in USDA inspected facilities, this product must be applied in tamper-resistant bait stations. Do not broadcast bait. Do not use this product in sewers.

Do not sell this product in individual containers holding less than 16 pounds of bait.

**SELECTION OF TREATMENT AREAS:**

Determine areas where rats, mice or meadow voles\* will most likely find and consume the bait. Generally, these areas are along walls, by gnawed openings, in corners and concealed places, between floors and walls, or in locations where rodents or their signs have been seen. Protect bait from rain and snow. Remove as much alternative food as possible.

**APPLICATION DIRECTIONS:**

*(Only one of the following “Application Directions” will appear on a given label)*

***Application Directions for 0.35 ounce (10 g) size blocks:***

**Rats:**

Apply 9 to 43 blocks per placement, usually spaced 15- to 30- feet apart. Maintain a constant supply of fresh bait for 10 days or until signs of rat activity cease.

**Mice and Meadow Voles\*:**

Apply 1 block per placement, usually spaced 8- to 12-feet apart. Up to 2 blocks may be needed at points of very high activity. Maintain a constant supply of fresh bait for 15 days or until signs of mouse or meadow vole\* activity cease.

**OR**

***Application Directions for 1 ounce (28 g) size blocks:***

**Rats:**

Apply 3 to 16 blocks per placement, usually spaced 15- to 30- feet apart. Maintain a constant supply of fresh bait for 10 days or until signs of rat activity cease.

**Mice and Meadow Voles\*:**

Apply 1 block per placement, usually spaced 8- to 12-feet apart. Up to 2 blocks may be needed at points of very high activity. Maintain a constant supply of fresh bait for 15 days or until signs of mouse or meadow vole\* activity cease.

**Follow-up:**

Replace contaminated or spoiled bait immediately. Using waterproof gloves, collect and properly dispose of all visible dead animals and leftover bait. To discourage reinfestation, limit sources of rodent food, water, and harborage as much as possible. If reinfestation does occur, repeat treatment. For a continuous infestation, set up permanent bait stations and replenish bait as needed.

***Bold, italicized text is information for the reader and is not part of the label.***

[Bracketed information is optional text.]

Text separated by / denotes and/or options.

### **STORAGE AND DISPOSAL**

Do not contaminate water, food or feed by storage or disposal.

**Pesticide Storage:** Store only in original container in a cool, dry place inaccessible to children and pets. Keep containers closed and away from other chemicals.

**Pesticide Disposal:** Wastes resulting from the use of this product may be placed in trash or delivered to an approved waste disposal facility.

**Container Handling:** Nonrefillable container. Do not reuse or refill this container. Offer for recycling, if available. Dispose of empty container by placing in trash, at an approved waste disposal facility or by incineration.

**WARRANTY:** To the extent consistent with applicable law, seller makes no warranty, expressed or implied, concerning the use of this product other than indicated on the label. Buyer assumes all risk of use and/or handling of this material when such use and/or handling is contrary to label instructions.

***Bold, italicized text is information for the reader and is not part of the label.***

[Bracketed information is optional text.]

Text separated by / denotes and/or options.

# Conrac® All-Weather Blox

[*Alternate Brand Name*] **Ratrac® Blox**

***KILLS RATS, MICE, AND MEADOW VOLES\****

***KILLS WARFARIN RESISTANT NORWAY RATS***

Norway rats, roof rats, and house mice may consume a lethal dose in one night's feeding with the first dead rodents appearing four or five days after feeding begins.

**ACTIVE INGREDIENT**

Bromadiolone (CAS # 28772-56-7)	.....	0.005%
OTHER INGREDIENTS†	.....	<u>99.995%</u>
<b>TOTAL</b>	.....	<b>100.00%</b>

†Contains Denatonium Benzoate

EPA REG. NO. 12455-79

EPA EST. NO. 12455-WI-1<sup>k</sup>

EPA EST. NO. 12455-WI-2<sup>p</sup>

EPA EST. NO. 12455-WI-3<sup>w</sup>

[superscript is first letter of the lot number]

**KEEP OUT OF REACH OF CHILDREN  
CAUTION**

**NET CONTENTS:** 10 g Block / 45 – 453 Blocks

***Alternate Sizes:*** 28 g Block / 16 – 640 Blocks

**NET WEIGHT:** 1 to 10 lbs. (0.453– 4.53 kg)

**Manufactured By:**



**Bell Laboratories, Inc.**  
3699 Kinsman Blvd.  
Madison, WI 53704

**Batch Code:**

**INDIVIDUAL SALE IS PROHIBITED BY LAW**

See back [bottom] [and] [side] panel[s] for  
First Aid, additional Precautionary Statements, and Directions for Use.

\*Not permitted for use against the following species in California: Cotton rat, Eastern harvest mouse, Golden mouse, Polynesian rat, Meadow vole, White-throated woodrat, Southern plains woodrat, and Mexican woodrat

***Bold, italicized text is information for the reader and is not part of the label.***

[Bracketed information is optional text.]

Text separated by / denotes and/or options.

<b>FIRST AID</b> <b>HAVE LABEL WHEN OBTAINING TREATMENT ADVICE</b>	
<b>If Swallowed:</b>	<ul style="list-style-type: none"><li>• Call a poison control center, doctor, or <b>1-877-854-2494</b> immediately for treatment advice.</li><li>• Have person sip a glass of water if able to swallow.</li><li>• Do not induce vomiting unless told to do so by the poison control center or doctor.</li><li>• Do not give anything by mouth to an unconscious person.</li></ul>
<b>If on Skin or Clothing:</b>	<ul style="list-style-type: none"><li>• Take off contaminated clothing.</li><li>• Rinse skin with plenty of cool water for 15-20 minutes.</li><li>• Call a poison control center or doctor immediately for treatment advice.</li></ul>
<b>If in Eyes:</b>	<ul style="list-style-type: none"><li>• Hold eye open and rinse slowly and gently with water for 15-20 minutes.</li><li>• Remove contact lenses, if present, after the first 5 minutes, then continue rinsing eye.</li><li>• Call a poison control center or doctor immediately for treatment advice.</li></ul>
<b>NOTE TO PHYSICIAN</b> If swallowed or absorbed through the skin, this material may reduce the clotting ability of the blood and cause bleeding. If ingested, administer Vitamin K <sub>1</sub> intramuscularly or orally. Repeat as necessary based on monitoring of prothrombin times.	
<b>TREATMENT FOR PET POISONING</b> If an animal eats this bait, call a veterinarian or <b>1-877-854-2494</b> at once.	
<b>NOTE TO VETERINARIAN</b> For animals ingesting bait and/or showing poisoning signs (bleeding or elevated prothrombin times), give Vitamin K <sub>1</sub> . If needed, check prothrombin times every 3 days until values return to normal (up to 30 days). In severe cases, blood transfusions may be needed.	

### **PRECAUTIONARY STATEMENTS**

#### **Hazards to Humans and Domestic Animals**

**CAUTION:** Harmful if swallowed or absorbed through the skin. Causes moderate eye irritation. Keep away from children, domestic animals and pets. Do not get in eyes, on skin, or on clothing. All handlers (including applicators) must wear long pants, shoes, socks, and waterproof gloves. Any person who retrieves carcasses or unused bait following application of this product must wear waterproof gloves.

#### **User Safety Requirements**

Follow manufacturer's instruction for cleaning/maintaining PPE. If no such instructions for washables exists, use detergent and hot water. Keep and wash PPE separately from other laundry. Remove PPE immediately after handling this product. Wash the outside of gloves before removing them. As soon as possible, wash hands thoroughly after applying bait and before eating, drinking, chewing gum, using tobacco or using the toilet and change into clean clothing.

***Bold, italicized text is information for the reader and is not part of the label.***

[Bracketed information is optional text.]

Text separated by / denotes and/or options.

## ENVIRONMENTAL HAZARDS

This product is extremely toxic to fish, birds and other wildlife. Dogs and predatory and scavenging mammals and birds might be poisoned if they feed upon animals that have eaten this bait. Do not apply this product directly to water or to areas where surface water is present or to intertidal areas below the mean high water mark. Runoff also may be hazardous to aquatic organisms in water adjacent to treated areas. Do not contaminate water when disposing of equipment wash water or rinsate.

## DIRECTIONS FOR USE

It is a violation of Federal law to use this product in a manner inconsistent with its labeling.

**READ THIS LABEL:** Read this entire label and follow all use directions and use precautions. Use only for sites, pests, and application methods described on this label.

**IMPORTANT:** Do not expose children, pets, or nontarget animals to rodenticides. To help to prevent exposure:

1. Store unused product out of reach of children and pets.
2. Apply bait in locations out of reach of children, pets, domestic animals and nontarget wildlife, or in tamper-resistant bait stations. These stations must be resistant to destruction by dogs and by children under six years of age, and must be used in a manner that prevents such children from reaching into bait compartments and obtaining bait. If bait can be shaken from bait stations when they are lifted, units must be secured or otherwise immobilized. Stronger bait stations are needed in areas open to hooved livestock, raccoons, bears, or other potentially destructive animals, or in areas prone to vandalism.
3. Dispose of product container and unused, spoiled, or unconsumed bait as specified on this label.

**Bait stations are mandatory for outdoor, above-ground use. Tamper-resistant bait stations must be used wherever children, pets, non-target mammals, or birds may have access to the bait placement location.**

## USE RESTRICTIONS:

This product may only be used to control the following rodent pests in and around man-made structures: House mouse (*Mus musculus*), Norway rat (*Rattus norvegicus*), Roof rat (*Rattus rattus*), Cotton mouse (*Peromyscus gossypinus*), Cotton rat\* (*Sigmodon hispidus*), Deer mouse (*Peromyscus maniculatus*), Eastern harvest mouse\* (*Reithrodontomys humuli*), Golden mouse\* (*Ochrotomys nuttalli*), Polynesian rat\* (*Rattus exulans*), Meadow vole\* (*Microtus pennsylvanicus*), White-footed mouse (*Peromyscus leucopus*), White-throated woodrat\* (*Neotoma albigula*), Southern plains woodrat\* (*Neotoma micropus*), and Mexican woodrat\* (*Neotoma mexicana*). This product must be used in and within 100 feet of man-made structures constructed in a manner so as to be vulnerable to commensal rodent invasions and/or to harboring or attracting rodent infestations. Examples of such structures include homes and other permanent or temporary residences, food processing facilities, industrial and commercial buildings, trash receptacles, agricultural and public buildings, transport vehicles (ships, trains, aircraft), docks and port or terminal buildings and related structures around and associated with these sites. Fence and perimeter baiting, beyond 100 feet from a structure as defined above, is prohibited. This product must not be applied directly to food or feed crops.

Burrow baiting with Contra<sup>®</sup> All-Weather Blox [This Product] is prohibited.

***Bold, italicized text is information for the reader and is not part of the label.***

[Bracketed information is optional text.]

Text separated by / denotes and/or options.



Do not place bait near or inside ventilation duct openings. Do not contaminate water, food, feedstuffs, food or feed handling equipment, or milk or meat handling equipment or surfaces that come into direct contact with food. When used in USDA inspected facilities, this product must be applied in tamper-resistant bait stations. Do not broadcast bait. Do not use this product in sewers.

Do not sell this product in individual containers holding less than 16 pounds of bait.

**SELECTION OF TREATMENT AREAS:**

Determine areas where rats, mice or meadow voles\* will most likely find and consume the bait. Generally, these areas are along walls, by gnawed openings, in corners and concealed places, between floors and walls, or in locations where rodents or their signs have been seen. Protect bait from rain and snow. Remove as much alternative food as possible.

**APPLICATION DIRECTIONS:**

*(Only one of the following “Application Directions” will appear on a given label)*

***Application Directions for 0.35 ounce (10 g) size blocks:***

**Rats:**

Apply 9 to 43 blocks per placement, usually spaced 15- to 30- feet apart. Maintain a constant supply of fresh bait for 10 days or until signs of rat activity cease.

**Mice and Meadow Voles\*:**

Apply 1 block per placement, usually spaced 8- to 12-feet apart. Up to 2 blocks may be needed at points of very high activity. Maintain a constant supply of fresh bait for 15 days or until signs of mouse or meadow vole\* activity cease.

**OR**

***Application Directions for 1 ounce (28 g) size blocks:***

**Rats:**

Apply 3 to 16 blocks per placement, usually spaced 15- to 30- feet apart. Maintain a constant supply of fresh bait for 10 days or until signs of rat activity cease.

**Mice and Meadow Voles\*:**

Apply 1 block per placement, usually spaced 8- to 12-feet apart. Up to 2 blocks may be needed at points of very high activity. Maintain a constant supply of fresh bait for 15 days or until signs of mouse or meadow vole\* activity cease.

**Follow-up:**

Replace contaminated or spoiled bait immediately. Using waterproof gloves, collect and properly dispose of all visible dead animals and leftover bait. To discourage reinfestation, limit sources of rodent food, water, and harborage as much as possible. If reinfestation does occur, repeat treatment. For a continuous infestation, set up permanent bait stations and replenish bait as needed.

***Bold, italicized text is information for the reader and is not part of the label.***

[Bracketed information is optional text.]

Text separated by / denotes and/or options.

### **STORAGE AND DISPOSAL**

Do not contaminate water, food or feed by storage or disposal.

**Pesticide Storage:** Store only in original container in a cool, dry place inaccessible to children and pets. Keep containers closed and away from other chemicals.

**Pesticide Disposal:** Wastes resulting from the use of this product may be placed in trash or delivered to an approved waste disposal facility.

**Container Handling:** Nonrefillable container. Do not reuse or refill this container. Offer for recycling, if available. Dispose of empty container by placing in trash, at an approved waste disposal facility or by incineration.

**WARRANTY:** To the extent consistent with applicable law, seller makes no warranty, expressed or implied, concerning the use of this product other than indicated on the label. Buyer assumes all risk of use and/or handling of this material when such use and/or handling is contrary to label instructions.

***Bold, italicized text is information for the reader and is not part of the label.***

[Bracketed information is optional text.]

Text separated by / denotes and/or options.

# Conrac® All-Weather Blox

[*Alternate Brand Name*] **Ratrac® Blox**

This product may only be used inside and within 100 feet of agricultural buildings and man-made agricultural structures.

***KILLS RATS, MICE, AND MEADOW VOLES\****

***KILLS WARFARIN RESISTANT NORWAY RATS***

Norway rats, roof rats, and house mice may consume a lethal dose in one night's feeding with the first dead rodents appearing four or five days after feeding begins.

ACTIVE INGREDIENT		
Bromadiolone (CAS # 28772-56-7)	.....	0.005%
OTHER INGREDIENTS†	.....	<u>99.995%</u>
<b>TOTAL</b>	.....	<b>100.00%</b>

†Contains Denatonium Benzoate

EPA REG. NO. 12455-79

EPA EST. NO. 12455-WI-1<sup>k</sup>

EPA EST. NO. 12455-WI-2<sup>p</sup>

EPA EST. NO. 12455-WI-3<sup>w</sup>

[superscript is first letter of the lot number]

**KEEP OUT OF REACH OF CHILDREN**  
**CAUTION**

**NET CONTENTS:** 10 g Block / 363 – 2268 Blocks

***Alternate Sizes:*** 28 g Block / 129 – 810 Blocks

**NET WEIGHT:** 8 to 50 lbs. (3.63 – 22.68 kg)

Manufactured By:



**Bell Laboratories, Inc.**

3699 Kinsman Blvd.

Madison, WI 53704

**Batch Code:**

[*For Agricultural Use Label: Add the following for packages containing less than 8 lbs. of bait:*]

**IT IS ILLEGAL TO SELL THIS PRODUCT IN PACKAGES  
HOLDING LESS THAN 8 POUNDS OF BAIT**

See back [bottom] [and] [side] panel[s] for  
First Aid, additional Precautionary Statements, and Directions for Use.

\*Not permitted for use against the following species in California: Cotton rat, Eastern harvest mouse, Golden mouse, Polynesian rat, Meadow vole, White-throated woodrat, Southern plains woodrat, and Mexican woodrat

***Bold, italicized text is information for the reader and is not part of the label.***

[Bracketed information is optional text.]

Text separated by / denotes and/or options.

<b>FIRST AID</b> <b>HAVE LABEL WHEN OBTAINING TREATMENT ADVICE</b>	
<b>If Swallowed:</b>	<ul style="list-style-type: none"><li>• Call a poison control center, doctor, or <b>1-877-854-2494</b> immediately for treatment advice.</li><li>• Have person sip a glass of water if able to swallow.</li><li>• Do not induce vomiting unless told to do so by the poison control center or doctor.</li><li>• Do not give anything by mouth to an unconscious person.</li></ul>
<b>If on Skin or Clothing:</b>	<ul style="list-style-type: none"><li>• Take off contaminated clothing.</li><li>• Rinse skin with plenty of cool water for 15-20 minutes.</li><li>• Call a poison control center or doctor immediately for treatment advice.</li></ul>
<b>If in Eyes:</b>	<ul style="list-style-type: none"><li>• Hold eye open and rinse slowly and gently with water for 15-20 minutes.</li><li>• Remove contact lenses, if present, after the first 5 minutes, then continue rinsing eye.</li><li>• Call a poison control center or doctor immediately for treatment advice.</li></ul>
<b>NOTE TO PHYSICIAN</b> If swallowed or absorbed through the skin, this material may reduce the clotting ability of the blood and cause bleeding. If ingested, administer Vitamin K <sub>1</sub> intramuscularly or orally. Repeat as necessary based on monitoring of prothrombin times.	
<b>TREATMENT FOR PET POISONING</b> If an animal eats this bait, call a veterinarian or 1-877-854-2494 at once.	
<b>NOTE TO VETERINARIAN</b> For animals ingesting bait and/or showing poisoning signs (bleeding or elevated prothrombin times), give Vitamin K <sub>1</sub> . If needed, check prothrombin times every 3 days until values return to normal (up to 30 days). In severe cases, blood transfusions may be needed.	

### **PRECAUTIONARY STATEMENTS**

#### **Hazards to Humans and Domestic Animals**

**CAUTION:** Harmful if swallowed or absorbed through the skin. Causes moderate eye irritation. Keep away from children, domestic animals and pets. Do not get in eyes, on skin, or on clothing. All handlers (including applicators) must wear long pants, shoes, socks, and waterproof gloves. Any person who retrieves carcasses or unused bait following application of this product must wear waterproof gloves.

#### **User Safety Requirements**

Follow manufacturer's instruction for cleaning/maintaining PPE. If no such instructions for washables exists, use detergent and hot water. Keep and wash PPE separately from other laundry. Remove PPE immediately after handling this product. Wash the outside of gloves before removing them. As soon as possible, wash hands thoroughly after applying bait and before eating, drinking, chewing gum, using tobacco or using the toilet and change into clean clothing.

***Bold, italicized text is information for the reader and is not part of the label.***

[Bracketed information is optional text.]

Text separated by / denotes and/or options.

## ENVIRONMENTAL HAZARDS

This product is extremely toxic to fish, birds and other wildlife. Dogs and predatory and scavenging mammals and birds might be poisoned if they feed upon animals that have eaten this bait. Do not apply this product directly to water or to areas where surface water is present or to intertidal areas below the mean high water mark. Runoff also may be hazardous to aquatic organisms in water adjacent to treated areas. Do not contaminate water when disposing of equipment wash water or rinsate.

## DIRECTIONS FOR USE

It is a violation of Federal law to use this product in a manner inconsistent with its labeling.

**READ THIS LABEL:** Read this entire label and follow all use directions and use precautions. Use only for sites, pests, and application methods described on this label.

**IMPORTANT:** Do not expose children, pets, or nontarget animals to rodenticides. To help to prevent exposure:

1. Store unused product out of reach of children and pets.
2. Apply bait in locations out of reach of children, pets, domestic animals and nontarget wildlife, or in tamper-resistant bait stations. These stations must be resistant to destruction by dogs and by children under six years of age, and must be used in a manner that prevents such children from reaching into bait compartments and obtaining bait. If bait can be shaken from bait stations when they are lifted, units must be secured or otherwise immobilized. Stronger bait stations are needed in areas open to hooved livestock, raccoons, bears, or other potentially destructive animals, or in areas prone to vandalism.
3. Dispose of product container and unused, spoiled, or unconsumed bait as specified on this label.

**Bait stations are mandatory for outdoor, above-ground use. Tamper-resistant bait stations must be used wherever children, pets, non-target mammals, or birds may have access to the bait placement location.**

## USE RESTRICTIONS:

This product may only be used to control the following rodent pests in and around agricultural buildings and man-made agricultural structures: House mouse (*Mus musculus*), Norway rat (*Rattus norvegicus*), Roof rat (*Rattus rattus*), Cotton mouse (*Peromyscus gossypinus*), Cotton rat\* (*Sigmodon hispidus*), Deer mouse (*Peromyscus maniculatus*), Eastern harvest mouse\* (*Reithrodontomys humuli*), Golden mouse\* (*Ochrotomys nuttalli*), Polynesian rat\* (*Rattus exulans*), Meadow vole\* (*Microtus pennsylvanicus*), White-footed mouse (*Peromyscus leucopus*), White-throated woodrat\* (*Neotoma albigula*), Southern plains woodrat\* (*Neotoma micropus*), and Mexican woodrat\* (*Neotoma mexicana*). This product must be used in and within 100 feet of agricultural buildings and man-made agricultural structures constructed in a manner so as to be vulnerable to commensal rodent invasions and/or to harboring or attracting rodent infestations. Fence and perimeter baiting, beyond 100 feet from an agricultural structure as defined above, is prohibited. This product must not be applied directly to food or feed crops.

Burrow baiting with Contra<sup>®</sup> All-Weather Blox [This Product] is prohibited.

***Bold, italicized text is information for the reader and is not part of the label.***

[Bracketed information is optional text.]

Text separated by / denotes and/or options.

Do not use in homes or human residences. Do not place bait near or inside ventilation duct openings. Do not contaminate water, food, feedstuffs, food or feed handling equipment, or milk or meat handling equipment or surfaces that come into direct contact with food. Do not broadcast bait. When used in USDA inspected facilities, this product must be applied in tamper-resistant bait stations.

Do not sell this product in individual containers holding less than 8 pounds of bait.

**SELECTION OF TREATMENT AREAS:**

Determine areas where rats, mice or meadow voles\* will most likely find and consume the bait. Generally, these areas are along walls, by gnawed openings, in corners and concealed places, between floors and walls, or in locations where rodents or their signs have been seen. Protect bait from rain and snow. Remove as much alternative food as possible.

**APPLICATION DIRECTIONS:**

*(Only one of the following “Application Directions” will appear on a given label)*

***Application Directions for 0.35 ounce (10 g) size blocks:***

**Rats:**

Apply 9 to 43 blocks per placement, usually spaced 15- to 30- feet apart. Maintain a constant supply of fresh bait for 10 days or until signs of rat activity cease.

**Mice and Meadow Voles\*:**

Apply 1 block per placement, usually spaced 8- to 12-feet apart. Up to 2 blocks may be needed at points of very high activity. Maintain a constant supply of fresh bait for 15 days or until signs of mouse or meadow vole\* activity cease.

**OR**

***Application Directions for 1 ounce (28 g) size blocks:***

**Rats:**

Apply 3 to 16 blocks per placement, usually spaced 15- to 30- feet apart. Maintain a constant supply of fresh bait for 10 days or until signs of rat activity cease.

**Mice and Meadow Voles\*:**

Apply 1 block per placement, usually spaced 8- to 12-feet apart. Up to 2 blocks may be needed at points of very high activity. Maintain a constant supply of fresh bait for 15 days or until signs of mouse or meadow vole\* activity cease.

**Follow-up:**

Replace contaminated or spoiled bait immediately. Using waterproof gloves, collect and properly dispose of all visible dead animals and leftover bait. To discourage reinfestation, limit sources of rodent food, water, and harborage as much as possible. If reinfestation does occur, repeat treatment. For a continuous infestation, set up permanent bait stations and replenish bait as needed.

***Bold, italicized text is information for the reader and is not part of the label.***

[Bracketed information is optional text.]

Text separated by / denotes and/or options.

### **STORAGE AND DISPOSAL**

Do not contaminate water, food or feed by storage or disposal.

**Pesticide Storage:** Store only in original container in a cool, dry place inaccessible to children and pets. Keep containers closed and away from other chemicals.

**Pesticide Disposal:** Wastes resulting from the use of this product may be placed in trash or delivered to an approved waste disposal facility.

**Container Handling:** Nonrefillable container. Do not reuse or refill this container. Offer for recycling, if available. Dispose of empty container by placing in trash, at an approved waste disposal facility or by incineration.

**WARRANTY:** To the extent consistent with applicable law, seller makes no warranty, expressed or implied, concerning the use of this product other than indicated on the label. Buyer assumes all risk of use and/or handling of this material when such use and/or handling is contrary to label instructions.

***Bold, italicized text is information for the reader and is not part of the label.***

[Bracketed information is optional text.]

Text separated by / denotes and/or options.

# Conrac® All-Weather Blox

[*Alternate Brand Name*] **Ratrac® Blox**

***KILLS RATS, MICE, AND MEADOW VOLES\****

***KILLS WARFARIN RESISTANT NORWAY RATS***

Norway rats, roof rats, and house mice may consume a lethal dose in one night's feeding with the first dead rodents appearing four or five days after feeding begins.

**ACTIVE INGREDIENT**

Bromadiolone (CAS # 28772-56-7)	.....	0.005%
OTHER INGREDIENTS†	.....	<u>99.995%</u>
<b>TOTAL</b>	.....	<b>100.00%</b>

†Contains Denatonium Benzoate

EPA REG. NO. 12455-79

EPA EST. NO. 12455-WI-1<sup>k</sup>

EPA EST. NO. 12455-WI-2<sup>p</sup>

EPA EST. NO. 12455-WI-3<sup>w</sup>

[superscript is first letter of the lot number]

**KEEP OUT OF REACH OF CHILDREN  
CAUTION**

**NET CONTENTS:** 10 g Block / 45 – 181 Blocks

***Alternate Sizes:*** 28 g Block / 16 – 64 Blocks

**NET WEIGHT:** 1 to 4 lbs. (0.453– 1.81kg)

**Manufactured By:**



**Bell Laboratories, Inc.**  
3699 Kinsman Blvd.  
Madison, WI 53704

**Batch Code:**

**INDIVIDUAL SALE IS PROHIBITED BY LAW**

See back [bottom] [and] [side] panel[s] for  
First Aid, additional Precautionary Statements, and Directions for Use.

\*Not permitted for use against the following species in California: Cotton rat, Eastern harvest mouse, Golden mouse, Polynesian rat, Meadow vole, White-throated woodrat, Southern plains woodrat, and Mexican woodrat

***Bold, italicized text is information for the reader and is not part of the label.***

[Bracketed information is optional text.]

Text separated by / denotes and/or options.



<b>FIRST AID</b> <b>HAVE LABEL WHEN OBTAINING TREATMENT ADVICE</b>	
<b>If Swallowed:</b>	<ul style="list-style-type: none"><li>• Call a poison control center, doctor, or <b>1-877-854-2494</b> immediately for treatment advice.</li><li>• Have person sip a glass of water if able to swallow.</li><li>• Do not induce vomiting unless told to do so by the poison control center or doctor.</li><li>• Do not give anything by mouth to an unconscious person.</li></ul>
<b>If on Skin or Clothing:</b>	<ul style="list-style-type: none"><li>• Take off contaminated clothing.</li><li>• Rinse skin with plenty of cool water for 15-20 minutes.</li><li>• Call a poison control center or doctor immediately for treatment advice.</li></ul>
<b>If in Eyes:</b>	<ul style="list-style-type: none"><li>• Hold eye open and rinse slowly and gently with water for 15-20 minutes.</li><li>• Remove contact lenses, if present, after the first 5 minutes, then continue rinsing eye.</li><li>• Call a poison control center or doctor immediately for treatment advice.</li></ul>
<b>NOTE TO PHYSICIAN</b> If swallowed or absorbed through the skin, this material may reduce the clotting ability of the blood and cause bleeding. If ingested, administer Vitamin K <sub>1</sub> intramuscularly or orally. Repeat as necessary based on monitoring of prothrombin times.	
<b>TREATMENT FOR PET POISONING</b> If an animal eats this bait, call a veterinarian or <b>1-877-854-2494</b> at once.	
<b>NOTE TO VETERINARIAN</b> For animals ingesting bait and/or showing poisoning signs (bleeding or elevated prothrombin times), give Vitamin K <sub>1</sub> . If needed, check prothrombin times every 3 days until values return to normal (up to 30 days). In severe cases, blood transfusions may be needed.	

### **PRECAUTIONARY STATEMENTS**

#### **Hazards to Humans and Domestic Animals**

**CAUTION:** Harmful if swallowed or absorbed through the skin. Causes moderate eye irritation. Keep away from children, domestic animals and pets. Do not get in eyes, on skin, or on clothing.

All handlers (including applicators) must wear long pants, shoes, socks, and waterproof gloves. Any person who retrieves carcasses or unused bait following application of this product must wear waterproof gloves.

#### **User Safety Requirements**

Follow manufacturer's instruction for cleaning/maintaining PPE. If no such instructions for washables exists, use detergent and hot water. Keep and wash PPE separately from other laundry. Remove PPE immediately after handling this product. Wash the outside of gloves before removing them. As soon as possible, wash hands thoroughly after applying bait and before eating, drinking, chewing gum, using tobacco or using the toilet and change into clean clothing.

***Bold, italicized text is information for the reader and is not part of the label.***

[Bracketed information is optional text.]

Text separated by / denotes and/or options.

## ENVIRONMENTAL HAZARDS

This product is extremely toxic to fish, birds and other wildlife. Dogs and predatory and scavenging mammals and birds might be poisoned if they feed upon animals that have eaten this bait. Do not apply this product directly to water or to areas where surface water is present or to intertidal areas below the mean high water mark. Runoff also may be hazardous to aquatic organisms in water adjacent to treated areas. Do not contaminate water when disposing of equipment wash water or rinsate.

## DIRECTIONS FOR USE

It is a violation of Federal law to use this product in a manner inconsistent with its labeling.

**READ THIS LABEL:** Read this entire label and follow all use directions and use precautions. Use only for sites, pests, and application methods described on this label.

### IMPORTANT:

Do not expose children, pets, or nontarget animals to rodenticides. To help to prevent exposure:

1. Store unused product out of reach of children and pets.
2. Apply bait in locations out of reach of children, pets, domestic animals and nontarget wildlife, or in tamper-resistant bait stations. These stations must be resistant to destruction by dogs and by children under six years of age, and must be used in a manner that prevents such children from reaching into bait compartments and obtaining bait. If bait can be shaken from bait stations when they are lifted, units must be secured or otherwise immobilized. Stronger bait stations are needed in areas open to hooved livestock, raccoons, bears, or other potentially destructive animals, or in areas prone to vandalism.
3. Dispose of product container and unused, spoiled, or unconsumed bait as specified on this label.

**Bait stations are mandatory for outdoor, above-ground use. Tamper-resistant bait stations must be used wherever children, pets, non-target mammals, or birds may have access to the bait placement location.**

### USE RESTRICTIONS:

This product may only be used to control the following rodent pests in and around agricultural buildings and man-made agricultural structures: House mouse (*Mus musculus*), Norway rat (*Rattus norvegicus*), Roof rat (*Rattus rattus*), Cotton mouse (*Peromyscus gossypinus*), Cotton rat\* (*Sigmodon hispidus*), Deer mouse (*Peromyscus maniculatus*), Eastern harvest mouse\* (*Reithrodontomys humuli*), Golden mouse\* (*Ochrotomys nuttalli*), Polynesian rat\* (*Rattus exulans*), Meadow vole\* (*Microtus pennsylvanicus*), White-footed mouse (*Peromyscus leucopus*), White-throated woodrat\* (*Neotoma albigula*), Southern plains woodrat\* (*Neotoma micropus*), and Mexican woodrat\* (*Neotoma mexicana*). This product must be used in and within 100 feet of agricultural buildings and man-made agricultural structures constructed in a manner so as to be vulnerable to commensal rodent invasions and/or to harboring or attracting rodent infestations. Fence and perimeter baiting, beyond 100 feet from an agricultural structure as defined above, is prohibited. This product must not be applied directly to food or feed crops.

Burrow baiting with Conrac® All-Weather Blox [This Product] is prohibited.

***Bold, italicized text is information for the reader and is not part of the label.***

[Bracketed information is optional text.]

Text separated by / denotes and/or options.

Do not use in homes or human residences. Do not place bait near or inside ventilation duct openings. Do not contaminate water, food, feedstuffs, food or feed handling equipment, or milk or meat handling equipment or surfaces that come into direct contact with food. Do not broadcast bait. When used in USDA inspected facilities, this product must be applied in tamper-resistant bait stations.

Do not sell this product in individual containers holding less than 8 pounds of bait.

#### **SELECTION OF TREATMENT AREAS:**

Determine areas where rats, mice or meadow voles\* will most likely find and consume the bait. Generally, these areas are along walls, by gnawed openings, in corners and concealed places, between floors and walls, or in locations where rodents or their signs have been seen. Protect bait from rain and snow. Remove as much alternative food as possible.

#### **APPLICATION DIRECTIONS:**

*(Only one of the following “Application Directions” will appear on a given label)*

##### ***Application Directions for 0.35 ounce (10 g) size blocks:***

###### **Rats:**

Apply 9 to 43 blocks per placement, usually spaced 15- to 30- feet apart. Maintain a constant supply of fresh bait for 10 days or until signs of rat activity cease.

###### **Mice and Meadow Voles\*:**

Apply 1 block per placement, usually spaced 8- to 12-feet apart. Up to 2 blocks may be needed at points of very high activity. Maintain a constant supply of fresh bait for 15 days or until signs of mouse or meadow vole\* activity cease.

**OR**

##### ***Application Directions for 1 ounce (28 g) size blocks:***

###### **Rats:**

Apply 3 to 16 blocks per placement, usually spaced 15- to 30- feet apart. Maintain a constant supply of fresh bait for 10 days or until signs of rat activity cease.

###### **Mice and Meadow Voles\*:**

Apply 1 block per placement, usually spaced 8- to 12-feet apart. Up to 2 blocks may be needed at points of very high activity. Maintain a constant supply of fresh bait for 15 days or until signs of mouse or meadow vole\* activity cease.

#### **Follow-up:**

Replace contaminated or spoiled bait immediately. Using waterproof gloves, collect and properly dispose of all visible dead animals and leftover bait. To discourage reinfestation, limit sources of rodent food, water, and harborage as much as possible. If reinfestation does occur, repeat treatment. For a continuous infestation, set up permanent bait stations and replenish bait as needed.

***Bold, italicized text is information for the reader and is not part of the label.***

[Bracketed information is optional text.]

Text separated by / denotes and/or options.

### **STORAGE AND DISPOSAL**

Do not contaminate water, food or feed by storage or disposal.

**Pesticide Storage:** Store only in original container in a cool, dry place inaccessible to children and pets. Keep containers closed and away from other chemicals.

**Pesticide Disposal:** Wastes resulting from the use of this product may be placed in trash or delivered to an approved waste disposal facility.

**Container Handling:** Nonrefillable container. Do not reuse or refill this container. Offer for recycling, if available. Dispose of empty container by placing in trash, at an approved waste disposal facility or by incineration.

**WARRANTY:** To the extent consistent with applicable law, seller makes no warranty, expressed or implied, concerning the use of this product other than indicated on the label. Buyer assumes all risk of use and/or handling of this material when such use and/or handling is contrary to label instructions.

***Bold, italicized text is information for the reader and is not part of the label.***

[Bracketed information is optional text.]

Text separated by / denotes and/or options.

**OPTIONAL MARKETING STATEMENTS:**

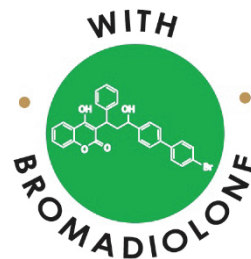
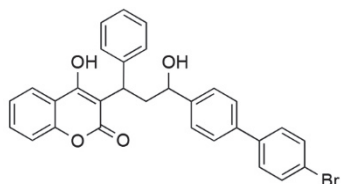
All-Weather	Kills Listed Rodent Species
All-Weather [Blocks][Block Bait]	Kills Meadow Voles*[Mice][Rats]
All-Weather Formula [Formulation]	Kills Rats, Mice and Meadow Voles*
Bait easily Secured Inside Station	Kills Warfarin Resistant Norway Rats
Bromadiolone	Made in USA
Can be only used indoors or out (within 100 ft of Homes and Buildings).	Moisture Resistant
City Pack [For Use Only on Marketplace Labeling for PCO Labeled Products]	Mold and [&] Moisture Resistant
Contains [With] Bromadiolone	Mold Resistant
Designed to be Used Indoors or [&][and] Out	Multi-edge shape gives rodents [Meadow Voles*][Mice][Rats] gnawing edges
For use in and around (within 100 ft of) Homes and Buildings	Rat, Mouse and Meadow Vole* Killer
For Indoor and [&] or Outdoor Use	Ready-To-Use
For Use Indoors and [&] or Outdoors	Ready-To-Use 0.35 oz. (10 g) Block [Block Bait]
For Use In and [&] or Around Homes and Buildings	Ready-To-Use 1 oz. (28 g) Block [Block Bait]
For Use Only In and [&] Homes and Buildings	Results Guaranteed <sup>▲</sup>
Indoor and Outdoor Use	<i><sup>▲</sup>BELL LABORATORIES, INC. GUARANTEE: If for any reason you, the consumer, are not satisfied with this product, mail us your original proof of purchase to obtain a full refund of your purchase price.”</i>

***Bold, italicized text is information for the reader and is not part of the label.***

[Bracketed information is optional text.]

Text separated by / denotes and/or options.

**OPTIONAL GRAPHICS:**



[Image of Bromadiolone Structure]



*Picture not representative of Bait Placement.  
Bait stations are mandatory for outdoor, above ground use.*



*Picture not representative of Bait Placement.  
Bait stations are mandatory for outdoor, above ground use.*



[For Use Only on Marketplace Labeling for PCO Labeled Products]

***Bold, italicized text is information for the reader and is not part of the label.***

[Bracketed information is optional text.]

Text separated by / denotes and/or options.